



MICHIGAN SOCIETY *for*  
RESPIRATORY CARE

# 2026 SPRING

C O N F E R E N C E

*And Pre-Conference Leadership Event*

**April 13-15, 2026**

Radisson Plaza Hotel | Kalamazoo



# Welcome to the Annual **MSRC Spring Conference!**

It is with great pleasure that we welcome you to Kalamazoo for MSRC's Spring Conference!

As a participant, you will explore advances in Respiratory Care, in the areas of acute care, neonatal-pediatrics, precepting, artificial intelligence, leadership, and other exciting topics. Our featured presentations exemplify our commitment to excellence by bringing you a blend of new science, new technologies, and industry together for evidence-based, best practices in Respiratory Care. Our goal is to help you increase your knowledge base and skill sets so you continue to provide evidence-based, cutting-edge care for your patients.

Spring Conference is also a powerful platform for peer networking with RTs and our corporate partners to strengthen our Respiratory Care community and to standardize best practice. We invite you to join our preconference leadership event and don't miss out on our House of Representatives meeting where we will be discussing updates to House Bill 5150, Advance Practice Respiratory Therapist (APRT), and other exciting MSRC initiatives.

Thank you for taking time out of your busy schedules to join us in Kalamazoo. Your dedication and commitment will ensure a strong future for Respiratory Care here in Michigan.

Enjoy yourself and have fun!

**Steven K. Hamick, BIS, RCP, RRT**  
**MSRC President**

**Gold Sponsor**

---

***Baxter***

---

**Gold Sponsor**

---

**CARELINC**  
Medical Equipment & Supply

# 2026 Spring Conference Committee

---

*Thank you  
for your hard work!*

---

Carissa Novak, BSRT, RRT-ACCS  
Conference Co-Chair

Nicholas Prush, Ph.D., RRT, RRT-ACCS, FAARC  
Conference Co-Chair

Alicia Wafer, MBA, RRT  
Conference Co-Chair

---

## **Committee Members:**

Amanda Ausmus, BS, RRT, RRT-ACCS

Christopher Culter, MBA, RRT-ACCS

Samantha Davis, MS, RRT, RRT-NPS, CHSE, FAARC

Kelly Dey, BSRT, RRT

Kelly Fiorino, MS, RRT-ACCS

Ashley Greene, BSRT, RRT-ACCS

Helen Grim, MS, RRT, RRT-ACCS

Jennifer Koetje, BSRT, RRT

Rena Laliberte BS, RRT, CPFT, FAARC

Elizabeth Santamaria, MEd, RRT, RRT-ACCS

Shane Spaulding, MHPE, RRT-ACCS

Jessica Sturgill, BBA, RRT

Jonathan Vono, MBA, RRT

## **Industrial Relations Committee:**

Kathryn Gurin, MA, RRT-ACCS

Bill Hart, RRT

Erica Hultman, MBA, RRT-ACCS

Renee Sorovetz, BS, RRT

Linda Zimcosky, MSA, RRT

# Conference Information

## Internet Access

**Network Name:** MSRC

**Password:** msrc2026

## Policies

All MSRC functions are non-smoking events. Use of cell phones or pagers during lectures is prohibited.

## Admission Badges

Event name badges must be worn by all persons attending the conference and visiting the exhibit hall. Your name badge is your admission to meetings, exhibits, lectures, the networking reception and Sputum Bowl. You will not be allowed to enter conference functions without your name badge.

## Lecture Locations

Information on lectures is provided in this program, at the registration desk and outside lecture rooms.

## House of Representatives Meeting

Tuesday, April 14

5:00 p.m.

Prairies Room

All attendees are welcome to attend.

## Sputum Bowl

Please join us for the **Sputum Bowl** finals on **Tuesday, April 14, at 7:00 p.m. in the Glens Room.**

Following the Sputum Bowl finals, join us for our annual celebration dance and party with a live DJ in the **Meadows Room!**

## Continuing Education Credit

This event is approved by the American Association for Respiratory Care (AARC).

The maximum an attendee can receive for the conference is 10.25 CRCEs (4/14/26 and 4/15/26).

The maximum an attendee can receive for the Leadership Pre-Conference is 5 CRCEs (4/13/26 only).

If you attend the Leadership Pre-Conference AND the conference you may earn up to 15.25 CRCEs (4/13/26-4/15/26).

## TO RECEIVE CONTINUING EDUCATION CREDIT, YOU MUST COMPLETE EVENT EVALUATION FORMS.

An electronic evaluation will be emailed to you the afternoon of each day of the conference. You must fill out the form by the end of each day you are attending. Survey submissions are due by Thursday, 4/30/26. Submissions will not be accepted after this date.

## Continuing Education Certificate Process

MSRC will email your continuing education credit certificate within 6 weeks of the conference. In order to receive your certificate, you must provide the correct spelling of your full name and current email address.



**Gold Sponsor**



---

**Gold Sponsor**



# Tuesday, April 14, 2026 UP TO 6 CRCEs

7:00 - 8:00 a.m. Kalamazoo Room	<b>Registration / Exhibit Hall Open</b>		
8:00 – 8:45 a.m. Plenary – Prairies	<b>The State of Our Society</b> Steven Hamick, BIS, RCP, RRT MSRC President		
8:45 – 9:30 a.m. Plenary – Prairies	<b>Breathing Easy: Building Psychological Safety for Respiratory Therapists</b> Gabrielle Davis MA, MPH, RRT-ACCS, RRT-NPS, TTS, LPC, FAARC		
9:30 – 10:00 a.m. Plenary – Prairies	<b>CoARC Update</b> Sarah Varekojis, PhD, RRT, RRT-ACCS, FNAP, FAARC	<b>Management Mingle</b> Kalamazoo Room	
10:00 – 10:30 a.m. Kalamazoo Room	<b>Break / Exhibit Hall Open</b> Snacks provided		
<b>Breakout Sessions</b>			
	<b>Acute Care Track</b> <i>Prairies</i>	<b>Student Track</b> <i>Great Lakes 4</i>	<b>Specialty Track</b> <i>Great Lakes 5</i>
10:30 – 11:15 a.m.	<b>The RT ECMO Specialist: Past, Present, and Future</b> Steve Robinson, BSN, RN, MBA, MSF	<b>Escape the Simulation!</b> Liz Santamaria, MEd, RRT, RRT-ACCS and Stephanie Marcincavage, BS, RRT <b>Room Location: Meadows</b>	<b>A Strong Start: Shaping Success Through Effective Orientation</b> Kristen Carpenter, RRT
11:20 a.m. – 12:05 p.m.	<b>Optimal PEEP</b> Ivan Co, MD	<b>Escape the Simulation!</b> Liz Santamaria, MEd, RRT, RRT-ACCS and Stephanie Marcincavage, BS, RRT <b>Room Location: Meadows</b>	<b>You're a Preceptor Today. Practice Precepting and Giving Feedback</b> Carissa Novak, BSRT, RRT-ACCS
12:05 – 1:20 p.m. Great Lakes 1-3	<b>Lunch -- registration/ticket required</b> <b>Exhibit Hall Open</b>		
1:20 – 2:05 p.m.	<b>Sepsis and Respiratory Failure: The RT Perspective and Approach</b> Andrew Weirauch, MS, RRT, RRT-ACCS	<b>Respiratory Disease Made Easy for Students</b> Kayla Ford, BS, RRT, RRT-NPS	<b>AI in Respiratory Care: RTs Need Not Be Afraid</b> Rena Laliberte, BS, RRT, CPFT, FAARC
2:10 – 2:55 p.m.	<b>Awake and Walking in the ICU</b> Jenni Koetje BSRT, RRT and Lynette LaBine, RN, MSN, CSN	<b>Preparing for the Transition to Night Shift</b> Ashley Greene, BSRT, RRT-ACCS	<b>Get Recognized! Overview of the Apex Recognition Award</b> Samantha Davis, MS, RRT, RRT-NPS, CHSE-A, FAARC <i>(30 minutes)</i>
3:00 – 4:00 p.m.	<b>The Difficult Airway</b> Krassimir Denchev, MD	<b>Board Ready: Strategy, Confidence, and Success</b> Joe Lewis, MSRC, RRT, RRT-ACCS	<b>Implementing Quality Improvement in Respiratory Care</b> Samantha Davis, MS, RRT, RRT-NPS, CHSE-A, FAARC
4:00 – 5:00 p.m. Kalamazoo Room	<b>Cocktail Reception / Networking</b> Cash bar		
5:00 – 6:00 p.m. Prairies	<b>MSRC House of Representatives Meeting</b> All attendees welcome		
7:00 – 8:30 p.m. Glens	<b>Sputum Bowl Championship</b> Cash bar		
8:30 p.m. – Midnight Meadows	<b>Dance</b>		

**Gold Sponsor**



**Trinity Health**

---

**Save the Date!**

*29th Annual Carolyn Kimmel Golf Scramble*

*Friday, July 31, 2026*

*Links at Whitmore Lake*



# Wednesday, April 15, 2026 UP TO 4.25 CRCES

7:00 - 8:00 a.m. <i>Exhibit Hall</i>	<b>Registration / Exhibit Hall Open</b>		
8:00 – 8:45 a.m. <i>Plenary – Prairies</i>	<b>Uniting for HOSA Engagement</b> <i>Diane Oldfather, MHEd, RRT, FAARC</i>		
8:45 – 9:45 a.m. <i>Plenary – Prairies</i>	<b>Recovering From Loss</b> <i>Maria Erickson, LMHC, Level I Certified-IFS, Level I Certified EMDR, Level 3 Certified Gottman Couples Counseling</i>		
9:45 – 10:15 a.m. <i>Kalamazoo Room</i>	<b>Break / Exhibit Hall Open</b> <i>Snacks provided</i>		
<b>Breakout Sessions</b>			
	<b>Acute Care Track</b> <i>Prairies</i>	<b>Specialty Track</b> <i>Great Lakes 4</i>	<b>Neo/Peds</b> <i>Great Lakes 5</i>
10:15 – 11:00 a.m.	<b>Strategies in Titrating PEEP</b> <i>Matt Gelmini, LRT, RRT</i>	<b>Pro/Con: Good – Not So Good AI in Healthcare</b> <i>Rena Laliberte, BS, RRT, CPFT, FAARC</i> <i>Diane Oldfather, MHEd, RRT, FAARC</i>	<b>Peek-A-Boo: NICU Edition – An RT’s X-Ray Survival Guide</b> <i>Christine Ketz, BSRT, RRT, CPFT</i>
11:05 – 11:50 a.m.	<b>Sync or Sink? Patient Ventilator Asynchrony Deep Dive</b> <i>Andrew Weirauch, MS, RRT, RRT-ACCS</i>	<b>Breathing Life into Donation</b> <i>Julie Donaldson, BSRT</i>	<b>From Pressure to Precision: The Evolution of Neonatal Ventilation Strategies</b> <i>Jason Ramsey, MHA, RRT, RRT-NPS</i>
11:50 a.m. – 1:20 p.m. <i>Great Lakes 1-3</i>	<b>Lunch -- registration/ticket required</b> <b>Exhibit Hall Open</b>		
1:20 – 2:20 p.m. <i>Prairies</i>	<b>RRTs to Infinity and Beyond! Roundtable</b> <i>Alicia Wafer RRT, MBA, and Nicholas Prush Ph.D., MHA, RRT, RRT-ACCS, FAARC</i>		

**CONFERENCE CONCLUDES – THANKS FOR JOINING US!**



## **Save the Date!**

*2027 MSRC Nominations and Elections.*

*Accepting Nominations Starting June 2026.*

*Voting to begin October 2026.*

*Make Plans to Nominate and Vote for MSRC House of Representatives positions!*

# Michigan Society for Respiratory Care 2026 Leadership Pre-Conference

**Monday, April 13**  
**12:00 – 5:00 p.m.**

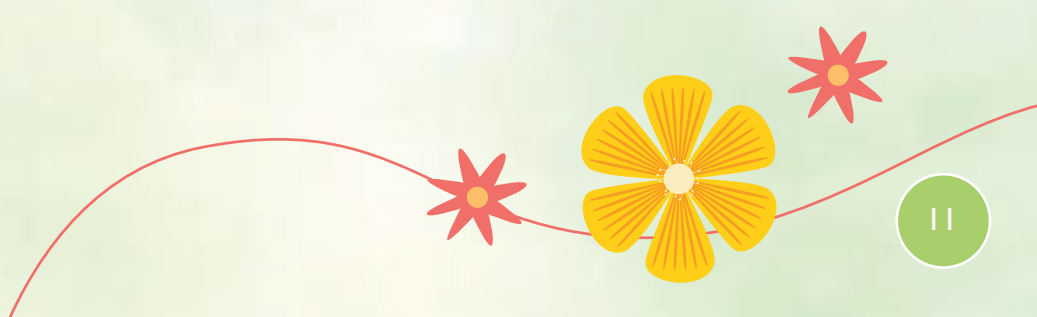
Prairies

*Up to 5 CRCEs*

*Lunch provided in the Prairies*

12:00 p.m. Prairies	<b>Got Cred? Advancing Your Professional Value</b> <i>Garry Kauffman, RRT, FAARC, MPA, FACHE</i>
1:00 p.m. Prairies	<b>Respiratory Therapist Engagement: Sustaining Excellence, Well-Being, and Professional Growth</b> <i>Duane Croel, MBA-HCM, BSRT, LRT-RRT, RRT-NPS, RRT-ACCS, RRT-SDS, CPFT, C-NPT, C-ELBW</i>
2:00 p.m. Prairies	<b>Using the SESE To Bolster Staffing Challenges for RTs</b> <i>Garry Kauffman, RRT, FAARC, MPA, FACHE</i>
3:00 p.m. Prairies	<b>Empower, Don't Rescue: Lead Like a Coach</b> <i>Jenni Koetje RRT, BSRT, and Jessica Sturgill, MS, RRT</i>
4:00 p.m. Prairies	<b>Leading Through Big Emotions</b> <i>Maria Erickson, LMHC, Level I Certified-IFS, Level I Certified EMDR, Level 3 Certified Gottman Couples Counseling</i>
5:00 p.m. Prairies	<b>Management Committee Meeting</b>

## SPONSORED BY



# Session Descriptions and Objectives

PRE-CONFERENCE LEADERSHIP EVENT 4/13/26

## **GOT CRED? ADVANCING YOUR PROFESSIONAL VALUE**

Monday 4/13/26 12:00 p.m.

Pre-Conference Leadership Event

Garry W Kauffman RRT FAARC MPA FACHE

Whether you're a new graduate, seasoned clinician, or aspiring leader, this webinar will provide you with practical strategies to enhance your professional presence and advance your career. Garry will share insights on how to establish credibility, demonstrate professionalism, and make a lasting impact in your workplace, regardless of your current role or level of experience.

This interactive session will help you understand how to project confidence, build trust with colleagues and patients, and position yourself as a respected professional in the respiratory care field. You'll discover actionable techniques for professional communication, leadership presence, and career advancement.

- Define the foundational elements that define professionalism
- Summarize the characteristics that align with professional behavior
- Apply the principles and characteristics of professionalism in your workplace

## **RESPIRATORY THERAPIST ENGAGEMENT: SUSTAINING EXCELLENCE, WELL-BEING, AND PROFESSIONAL GROWTH**

Monday 4/13/26 1:00 p.m.

Pre-Conference Leadership Event

Duane T. Croel, MBA-HCM, BSRT, LRT-RRT, RRT-NPS, RRT-ACCS, RRT-SDS, CPFT, C-NPT, C-ELBW

Whether you're a new graduate, seasoned clinician, or aspiring leader, this webinar will provide you with practical strategies to enhance your professional presence and advance your career. Garry will share insights on how to establish credibility, demonstrate professionalism, and make a lasting impact in your

workplace, regardless of your current role or level of experience.

This interactive session will help you understand how to project confidence, build trust with colleagues and patients, and position yourself as a respected professional in the respiratory care field. You'll discover actionable techniques for professional communication, leadership presence, and career advancement.

## **USING THE SESG TO BOLSTER STAFFING CHALLENGES FOR RTs**

Monday 4/13/26 2:00 p.m.

Pre-Conference Leadership Event

Garry W Kauffman RRT FAARC MPA FACHE

When faced with budget constraints, hospitals are engaging consultants to assist in improving revenue while decreasing expenses. Often these consultants attempt to evaluate the services provided by respiratory therapists with the broad, standard metrics of the industry that they are most familiar with. While these broad metrics work nicely as macro indicators for hospitals to benchmark with each other, they are a poor indicator of workload intensity for respiratory care services and thus inappropriate to use in making staffing determinations.

Developing and maintaining accurate time standards for your services by utilizing the nationally validated procedure time standards found in the AARC Safe and Effective Staffing Guide is important for several reasons: They can help objectively define staffing requirement for budget projections as the foundation of a credible productivity system, objective decisions about the staffing impact of service expansion and contraction can be made, they allow supervisors to flex staff required to meet workloads that may vary by shift, and they facilitate the use of a Value Efficiency approach to staffing and safe and effective delivery of respiratory care services.

- Understand the components of the AARC Safe and Effective Staffing Guide (SESG).
- Appreciate the standardization and validity of the activities and procedure times.
- Apply the resources from the SESG to accurately staff your department and include the principles of value-efficiency in delivering safe, effective, and high quality care.

# Session Descriptions and Objectives Continued

PRE-CONFERENCE LEADERSHIP EVENT 4/13/26

## **EMPOWER, DON'T RESCUE: LEAD LIKE A COACH**

Monday 4/13/26 3:00 p.m.  
Pre-Conference Leadership Event  
Jenni Koetje RRT, BSRT

A detailed presentation on The Empowerment Dynamic concept for managers. Transforming leadership through supportive and growth-focused approaches.

- Introduce a coaching leader mindset.
- Discuss the positive outcome from empowering and aid in solving manager/leader burnout while demonstrating specific applicaiton tools.

## **LEADING THROUGH BIG EMOTIONS**

Monday 4/13/26 4:00 p.m.  
Pre-Conference Leadership Event  
Maria Erickson, LMHC

When we, as leadership, are caught up in the short-term and long-term demands of our positions (not to mention our personal lives), we frequently survive by putting ourselves into overdrive and tunneling through our responsibilities in the most efficient way possible. We use all of our resources to keep our eyes focused on the road and prepare for the most probable obstacles popping up in front of us. The last thing we want to do is to focus on anything that is not cognitive and measurable, but human beings are more than cognition and measurement-both for ourselves and those we are responsible for. In order for us to reach full potential for ourselves and those who depend on us, we have to be aware of those emotions, values, and boundary violations that “come from our heart” and form the core of who we are and allow us to see those things in others so we can best guide them and lead them to the right resources. If that is your interest, this session is for you.

- As leaders, how do we assess what loads are we carrying for ourselves, and how do we measure them to determine how impactful they are to us.
- What Tolls can we use to mitigate the impact of our loads and assess if we need additional assistance to process them
- What are some techniques to increase our awareness of the impact of events on those we supervise. And what we use as supervisors to lessen or at least not deepen their impact.

# Session Descriptions and Objectives Continued

4/14/26 CONFERENCE SESSIONS

## THE STATE OF OUR SOCIETY

Tuesday 4/14/26 8:00 a.m.

Plenary Session

Steven Hamick, BIS, RCP, RRT

MSRC President

A clear & comprehensive update on the MSRC - including financial health, Membership, 2026 Goals, Legislative efforts, and future Society events.

- Update members on issues of legislative concern such as licensing; update members on MSRC's internal health, such as our financial outlook and membership participation; Provide update on 2026 goals and summary of upcoming events.

## BREATHING EASY: BUILDING PSYCHOLOGICAL SAFETY FOR RESPIRATORY THERAPISTS

Tuesday 4/14/26 8:45 a.m.

Plenary Session

Gabrielle Davis MA, MPH, RRT-ACCS, RRT-NPS, TTS, LPC, FAARC

This presentation will explore the importance of psychological safety in healthcare, focusing on how creating a supportive environment can enhance communication, teamwork and patient care outcomes. Respiratory therapists will learn strategies to foster trust, reduce fear of mistakes and promote a culture of openness and mutual respect.

- Define psychological safety and explain its significance in healthcare settings, particularly for respiratory therapists and interdisciplinary teams.
- Implement strategies to cultivate a psychologically safe environment that encourages openness, collaboration, and continuous learning among healthcare professionals.

## COARC UPDATE

Tuesday 4/14/26 9:30 a.m.

Plenary Session

Sarah Varekojis, PhD, RRT, RRT-ACCS, FNAP, FAARC

An update on the accreditation activities and services provided by the Commission on Accreditation for Respiratory Care in its mission to ensure high quality educational programs prepare graduates to be competent respiratory therapists.

- Discuss current CoARC programmatic accreditation scope.
- Discuss implications of various programmatic accreditation opportunities on the future of respiratory therapy education and practice.
- Discuss future CoARC initiatives.

## THE RT ECMO SPECIALIST: PAST, PRESENT, AND FUTURE

Tuesday 4/14/26 10:30 a.m.

Acute Care

Steve Robinson BSN, RN, MBA, MSF

Presentation will cover the history of RT contributions to the field of ECMO, ongoing contributions to ECMO, and how RT's can position themselves to continue to contribute to the delivery and advancement of ECMO in the future.

- Understand the history of RT in ECMO, Understand current delivery of ECMO and the RT role in that delivery, and learn how future ECMO delivery will likely model RT model of care.

# Session Descriptions and Objectives Continued

4/14/26 CONFERENCE SESSIONS

## ESCAPE THE SIMULATION!

Tuesday 4/14/26 10:30 a.m.

Student

Liz Santamaria, MEd, RRT, RRT-ACCS, Stephanie Marcincavage, BS, RRT

Take part in a Student RT simulation escape room! Students will use their knowledge and skills to work with team members solving puzzles, performing tasks, and decoding riddles all to save the patient and escape the simulation!

- Given a simulated patient scenario, the learner will be able to evaluate data.
- Given data from a simulated patient scenario, the learner will be able to solve riddles.
- Learners will be able to practice communication and teamwork skills.

## A STRONG START: SHAPING SUCCESS THROUGH EFFECTIVE ORIENTATION

Tuesday 4/14/26 10:30 a.m.

Specialty

Kristen Carpenter, RRT

This session introduces our structured 4–6 week orientation process designed to build confidence and competence for new respiratory care team members. The program features dedicated preceptors, an orientation binder with essential resources, skill check-offs, and quizzes. Weekly educator touchpoints and shadowing ensure readiness for progression through each section, creating a clear and supportive path toward success.

- Prepare, Support, Advance

## OPTIMAL PEEP

Tuesday 4/14/26 11:20 a.m.

Acute Care

Ivan Co, MD

This presentation will cover some of the common as well as advanced bedside tools in order to personalize and optimize PEEP for individual critically ill patients with respiratory failure and ARDS.

- Understand Transpulmonary Pressure
- Utilize tools at bedside to personalize PEEP for patients
- Compare different bedside assessment tools to optimize PEEP

## YOU'RE A PRECEPTOR TODAY. PRACTICE PRECEPTING AND GIVING FEEDBACK.

Tuesday 4/14/26 11:20 a.m.

Specialty

Carissa Novak BSRT, RRT-ACCS

This presentation will provide information on providing helpful feedback students and orientees. As well as, role playing with RT students to practice giving feedback.

- I will identify to help preceptor give constructive feedback.
- Attendees will demonstrate giving helpful feedback.
- We will summarize the activities during role playing and discuss how to apply in real life scenarios.

# Session Descriptions and Objectives Continued

4/14/26 CONFERENCE SESSIONS

## ESCAPE THE SIMULATION!

Tuesday 4/14/26 11:20 a.m.

Student

Liz Santamaria, MEd, RRT, RRT-ACCS, Stephanie Marcincavage, BS, RRT

Take part in a Student RT simulation escape room! Students will use their knowledge and skills to work with team members solving puzzles, performing tasks, and decoding riddles all to save the patient and escape the simulation!

- Given a simulated patient scenario, the learner will be able to evaluate data.
- Given data from a simulated patient scenario, the learner will be able to solve riddles.
- Learners will be able to practice communication and teamwork skills.

## RESPIRATORY DISEASE MADE EASY FOR STUDENTS

Tuesday 4/14/26 1:20 p.m.

Student

Kayla Ford, BS, RRT, RRT-NPS

This presentation will cover common respiratory disease overview and compare and contrast obstructive vs restrictive diseases. PFT findings and ventilator management will also be covered comparing the differences between obstructive and restrictive diseases.

- Compare and contrast obstructive lung diseases versus restrictive lung diseases
- Evaluate findings for PFT results in obstructive and restrictive lung diseases
- Evaluate ventilator data and findings in ventilator graphics for obstructive and restrictive lung disease

## AI IN RESPIRATORY CARE RT'S NEED NOT BE AFRAID

Tuesday 4/14/26 1:20 p.m.

Acute Care

Rena Laliberte BS, RRT, CPFT, FAARC

We will be discussing the benefits of Artificial Intelligence in Healthcare and how it relates to the field of Respiratory Care. The presenter will dispel the myth that the use of AI in the hospital setting will take over the roll of the bedside RT.

- Describe the use of AI in healthcare, specifically the hospital setting
- Discuss the role of the bedside RT and in relation to AI
- Demonstrate the usefulness of Artificial Intelligence and how it enhances, not hinders RT performance.

## **SEPSIS AND RESPIRATORY FAILURE: THE RT PERSPECTIVE AND APPROACH**

Tuesday 4/14/26 1:20 p.m.

Acute Care

Andrew Marshall, MBA, RRT, RRT-NPS

Sepsis is a common and often under recognized driver of respiratory failure. This presentation examines sepsis through a Respiratory Therapist's perspective, focusing on early respiratory manifestations, ventilatory challenges, and RT-driven interventions that influence outcomes. Emphasis will be placed on current practices within the state, to the practical bedside strategies, and the critical role Therapists play in recognizing and managing sepsis-related respiratory failure.

- Discuss evidence-based respiratory care strategies currently used in Michigan to manage sepsis-related respiratory failure across acute care settings.
- Examine early respiratory manifestations of sepsis, including clinical changes in assessment, laboratory considerations, and ventilatory mechanics, that may precede overt respiratory failure.
- Demonstrate the respiratory therapist's role in recognizing sepsis-related deterioration and implementing RT-driven interventions that support timely escalation of care and improved patient outcomes.

## **AWAKE AND WALKING IN THE ICU**

Tuesday 4/14/26 2:10 p.m.

Acute Care

Jenni Koetje BSRT, RRT, Lynette LaBine, RN, MSN, CSN

Mobility in the adult critical care population.

- Present the steps taken to begin and prepare for an Awake and Walking ICU.
- Describe the interdisciplinary roles and the collaboration.
- Share how the initiative has evolved and the data results

## **PREPARING FOR THE TRANSITION TO NIGHT SHIFT**

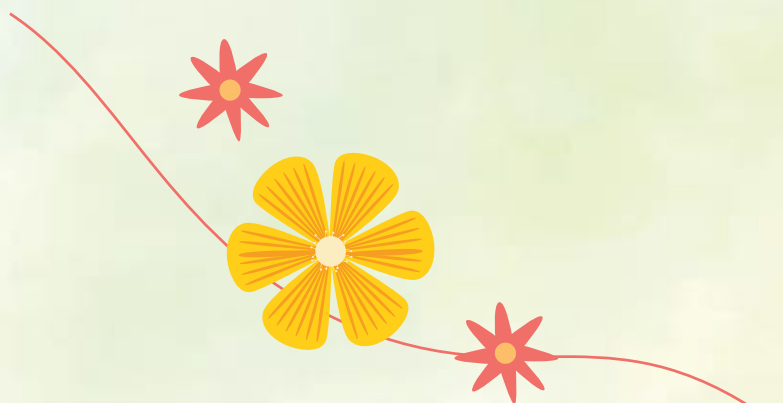
Tuesday 4/14/26 2:10 p.m.

Student

Ashley Greene, BSRT, RRT-ACCS

This presentation aims to prepare students or newly graduated RTs for the transition to night shift work. More specifically it will discuss work/ life balance, difference in workload from day to night shift, and managing healthy sleep habits during the transition.

- Compare day and night shift workloads
- Discuss work/ life balance on a night shift schedule
- Identify skills and tips for developing healthy sleep schedules



# Session Descriptions and Objectives Continued

4/14/26 CONFERENCE SESSIONS

## GET RECOGNIZED! OVERVIEW OF THE AARC APEX RECOGNITION AWARD

Tuesday 4/14/26 2:10 p.m.

Specialty

Samantha Davis, MS, RRT, RRT-NPS, CHSE-A, FAARC

This informational session and Q&A will review the AARC Apex Recognition Award, a program that honors respiratory care departments for their significant contributions and dedication to evidence-based practices. We'll discuss the purpose of the award, the application process, and the benefits of achieving this prestigious designation.

- Describe the purpose and significance of the AARC Apex Recognition Award.
- Outline the application process and requirements for achieving the Apex designation.
- Review the benefits and promotional advantages of receiving the award.

## BOARD READY: STRATEGY, CONFIDENCE, AND SUCCESS

Tuesday 4/14/26 3:00 p.m.

Student

Joe Lewis, MSRC, RRT, RRT-ACCS

“Board Ready: Strategy, Confidence, and Success” will guide students through how the NBRC exams are structured and why learning to think like an exam question writer is a game-changer. This session will break down strategies, mindset and decision-making so students approach test day with clarity and confidence.

- Identify exam strategies for both the TMC and CSE.
- Emphasize the importance of confidence and clarity for exam success.
- Discuss the importance of recognizing red flags

within exam questions.

## IMPLEMENTING QUALITY IMPROVEMENT IN RESPIRATORY CARE

Tuesday 4/14/26 3:00 p.m.

Specialty

Samantha Davis, MS, RRT, RRT-NPS, CHSE-A, FAARC

Participants in this interactive session will have the opportunity to brainstorm a quality improvement project they can introduce in their department. Participants will learn how to identify QI opportunities and develop a basic plan for a QI project.

- Identify and prioritize at least two potential quality improvement opportunities within your respiratory care department.
- Develop a basic, measurable aim statement for a quality improvement project.
- Outline key steps for initiating a QI project, including identifying stakeholders and potential interventions.

## THE DIFFICULT AIRWAY

Tuesday 4/14/26 3:00 p.m.

Krassimir Denchev, MD

- Recognition and management of anatomically difficult airway
- Recognition and management of physiologically

# Session Descriptions and Objectives Continued

4/15/26 CONFERENCE SESSIONS

difficult airway

## **UNITING FOR HOSA ENGAGEMENT**

Wednesday 4/15/26 8:00 a.m.

Plenary

Diane Oldfather, MHEd, RRT, FAARC

The AARC, NBRC, and CoARC continue to heighten awareness for Respiratory Therapy as a career choice through newly created partnerships and increased social media presence to attract students to join the Respiratory Therapist workforce. The AARC HOSA Committee within the House of Delegates (HOD) is charged to connect with affiliates and further share ideas to develop and strengthen affiliate partnerships with their state HOSA chapters. This presentation provides updates from the AARC HOD HOSA Committee, and highlights ideas shared between affiliate HOSA committee chairs through the AARC Connect HOSA Community.

- Discuss why a partnership with HOSA is important to the respiratory care profession.
- Identify strategies to develop an effective affiliate HOSA Committee.
- Discuss methods to profile the Respiratory Care profession through HOSA partnership.
- Engage the audience in identifying and sharing opportunities to heighten awareness of the Respiratory Care profession.

## **RECOVERING FROM LOSS**

Wednesday 4/15/26 8:45 a.m.

Plenary

Maria Erickson, LMHC

How to identify the losses in our lives that prevent us from moving forward; finding how to adjust to those losses, and finally how to recover from and grow from those losses.

- Identify the losses in our lives.
- Evaluate how they impact us
- Discuss how both recovery and growth can be the impact on us and our community

## **PEEK-A-BOO: NICU EDITION — A RESPIRATORY THERAPIST'S X-RAY SURVIVAL GUIDE**

Wednesday 4/15/26 10:15 a.m.

Neo/Peds

Christine Ketz, BSRT, RRT, CPFT

This presentation is designed to enhance the skills of respiratory therapists in interpreting and understanding radiographic images relevant to respiratory care. It provides a practical and concise review of imaging principles and their application in clinical practice.

By the end of this session, participants will be able to:

- Explain the basic principles of x-ray imaging and describe how radiographs are generated and interpreted in clinical practice.
- Identify normal and abnormal findings on chest and abdominal radiographs, with an emphasis on conditions that impact respiratory function and care planning.
- Assess the placement of common medical devices (e.g., endotracheal tubes, nasogastric tubes, chest tubes, central lines) on x-rays and recognize malpositions or complications relevant to respiratory care.

# Session Descriptions and Objectives Continued

4/15/26 CONFERENCE SESSIONS

## STRATEGIES IN TITRATING PEEP

Wednesday 4/15/26 10:15 a.m.

Acute Care

Matt Gelmini LRT,RRT

This session will discuss current methods of titrating PEEP in the ICU, including Esophageal Pressure Monitoring, Low Flow Pressure volume loop, EIT, and volumetric Capnography.

- When to use esophageal monitoring
- Using open lung strategy to reduce VILI
- Individualizing PEEP titration to the patient

## PRO/CON GOOD - NOT SO GOOD AI IN HEALTHCARE

Wednesday 4/15/26 10:15 a.m.

Acute Care

Rena Laliberte BS RRT CPFT FAARC

Diane Oldfather, MHEd, RRT, FAARC

Diane and Rena are back with their Pro/Con debate - The use of Artificial Intelligence in the healthcare setting. Will this be good for RTs or a nightmare come true? Let's discuss and see which will come out on top.

- Define Artificial Intelligence
- Explain current use of AI in Healthcare today
- Investigate the good and bad aspects of AI for the field of Respiratory Care

## BREATHING LIFE INTO DONATION

Wednesday 4/15/26 11:05 a.m.

Specialty

Julie Donaldson, BSRT

Welcome to Gift of Life Michigan's Special Event: Breathing Life into Donation.

- Describe the donation process including the RT's role in it.
- Discuss lung donor management.
- Summarize how RT's can be champions for organ donation.

## FROM PRESSURE TO PRECISION: THE EVOLUTION OF NEONATAL VENTILATION STRATEGIES

Wednesday 4/15/26 11:05 a.m.

Neo/Peds

Jason Ramsey, MHA, RRT, RRT-NPS

This session examines the scientific rationale and clinical evidence driving the evolution of neonatal respiratory care practices from early interventions to modern strategies and beyond.

- Describe major historical milestones that have influenced neonatal respiratory care practices.
- Discuss the physiologic and scientific evidence that inspired changes in neonatal respiratory support strategies.
- Compare traditional and contemporary neonatal ventilation approaches and associated patient outcomes.
- Evaluate evidence-based practices that led to lung-protective strategies in neonatal respiratory care. Identify emerging trends and future directions relevant to neonatal respiratory therapists.

# Session Descriptions and Objectives Continued

4/15/26 CONFERENCE SESSIONS

## SYNC OR SINK? PATIENT VENTILATOR ASYNCHRONY DEEP DIVE

Wednesday 4/15/26 11:05 a.m.

Acute Care

Andrew Weirauch, MS, RRT, RRT-ACCS

The importance of detecting Patient-Ventilator Asynchrony (PVA) is becoming prevalent. However, many of us are self-taught to identify and troubleshoot PVA. This lecture describes the major causes, types and corrections of PVAs. Easy to understand ventilator waveforms are used to demonstrate each PVA. The lecture discusses the possible impact of PVA on patient outcomes and how technology can be used in reducing PVA occurrence.

- Demonstrate PVA types.
- Discuss PVA solutions.
- Learn about technology that can aid in PVA.

## RRTS TO INFINITY AND BEYOND! ROUND TABLE

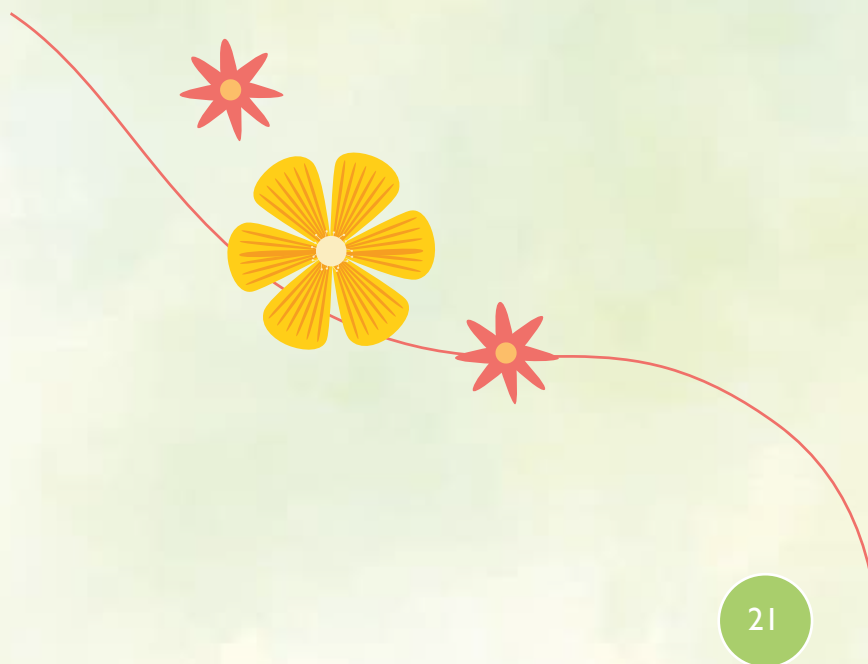
Wednesday 4/15/26 1:20 p.m.

Plenary

Alicia Wafer RRT, MBA, and Nicholas Prush Ph.D., RRT, RRT-ACCS, FAARC

Ever wonder what if? What roles in addition to bedside care could be out there for me? Could I create a niche that meets a need I've been thinking about? How did that RT end up in that role? What do I need to do to get there? This will be your interactive opportunity to hear from RT's who are in non-traditional roles and how they got there.

- Attendees will have the opportunity to hear how a career dream could become a reality
- Attendees will participate in a discussion with a variety of RRT's on their steps to creating their own niche to radically change their career path.
- Attendees will have the opportunity to ask questions to RT's who have changed to a non-traditional role



# Thank you to our Industry Partners!

As of 3/21/26

## **ABM Respiratory Care**

3913 Regal Pass NW  
Prior Lake MN 55372  
6125285754

**Theresa Reger, RRT**

theresa.reger@abmrc.com

## **Aerogen**

500 West Madison St Suite 1150  
Chicago IL 60661  
(281) 639-6483

**Colin Bearss**

CBearss@aerogen.com

**Brandon Hess**

BHess@aerogen.com

## **Airgas USA, LLC**

1121 Chippewa Street  
Jenison MI 49428  
616-591-6894

**Robert Nesky**

robert.nesky@airgas.com

**Kristin Makie**

kristin.makie@airgas.com

## **Airlife**

14172 larkspur  
Shelby Twp MI 48355  
586-850-4771

**John A Supanich Sales Consultant**

jsupanich@myairlife.com

**Nick Prevo Clinical Specialist**

Nprevo@myairlife.com

## **Baxter**

1020 West County Road F  
St.Paul MN 55126  
312-318-0096

**Jill Krabcher**

jill\_krabacher@baxter.com

**Matthew Wells**

matthew\_wells@baxter.com

**Deb Hoffman**

deb\_hoffman@baxter.com

## **C.S.Mott Children's Hospital/Michigan Medicine**

153 commons cir  
saline MI 48176  
7347761867

**Scott Cox, BAS, RRT-NPS**

chacox@med.umich.edu

**George Mitri, MS, RRT**

gmitri@med.umich.edu

jacain@med.umich.edu

## **CareLinc Medical Equipment**

89 54th St SW  
Grand Rapids MI 49548  
6162492273

**Mark Adams**

madams@carelincmed.com

## **CAREstream America**

1201 Upsala Rd  
Sanford FL 32771  
8558923872

**Lynette Bennett**

lbennett@carestreamamerica.com

## **Corewell Health**

100 Michigan Ave NE  
Grand Rapids MI 49503  
2312183465

**Jessica Sturgill, MS, RRT**

Jessica.Sturgill@corewellhealth.org

**Keven Tenhove, RRT**

keven.tenhove@corewellhealth.org

**Kathleen Smith, BS, RRT**

kathleen.smith@corewellhealth.org

## **Electromed, Inc**

500 Sixth Ave NW  
New Prague MN 56071  
517-512-0077

**Nicole Ellis**

nellis@electromed.com

## **Fisher & Paykel Healthcare**

17400 Laguna Canyon Road Suite 300  
Irvine CA 92618  
616-307-2110

**Amy Tidball**

Amy.Tidball@fphcare.com

**Megan Ilitch**

Megan.Ilitch@fphcare.com

# Thank you to our Industry Partners!

As of 3/21/26

## **Fitzsimmons Hospital Services**

2336 Alger  
Troy MI 48083  
440-570-9756

**Austin Oberle, Regional Sales Manager**

aoberle@fitzrents.com

**Kristina Zatkoff, Territory Manager**

kzatkoff@fitzrents.com

mlopez@fitzrents.com

## **Hamilton Medical**

201 Edison Way  
Reno NV 89502  
775-470-0229

**Gary Martin, MBA, RRT**

gary.martin@hamiltonmedical.com

**Matthew Gelmini, LRT, RRT**

matthew.gelmini@hamiltonmedical.com

## **Hart Medical**

5445 Ali Dr Suite C  
Grand Blanc MI 48439  
248-514-8401

**Dennis Gatscher, Sales Manager**

dennis.gatscher@hartmedical.org

**Susan Peck, RRT**

Susan.Peck@hartmedical.org

## **Mallinckrodt Pharmaceuticals**

440 Route 22 East Suite 302 Bridgewater, NJ, 08807  
Bridgewater NJ 08807  
7047406462

**Sean Gardner, Critical Care Business Manager**

sean.gardner@mnk.com

## **Mary Free Bed Rehabilitation Hospital**

788 N. Whitmore Road  
Hastings MI 49058  
2699082400

**Scott Thomas, RRT**

scott.thomas@maryfreebed.com

**Molly Bennett**

molly.bennett@maryfreebed.com

## **Masimo**

52 Discovery  
Irvine, CA 92618  
Phone 1: 9499697850

**Alex Kravat**

Alex.kravat@masimo.com

**Jason Gardner**

Jason.gardner@masimo.com

## **MED Alliance Group, Inc.**

2175 Oakland Dr.  
Sycamore IL 60178  
888-891-1200

**Rick Hasseld, Sales Representative**

rhasseld@medalliancegroup.com

**Ted Beatty, Sales Representative**

tbeatty@medalliancegroup.com

rwackenthaler@medalliancegroup.com

## **Medilodge**

600 West St Joseph Street  
Lansing MI 48933  
2489823913

**Katie Pung Regional RT**

kpung@medilodge.com

**Amanda St. Pierre**

astpierre@medilodge.com

## **Medline**

4353 Stonehenge Court  
Troy MI 48098  
3136457472

**Chris DeShetler, Medline**

cdeshetler@medline.com

## **Mercury Medical**

11300 49th Street N  
Clearwater FL 33762  
248-983-7881

**Mike Oppy**

moppy@mercurymed.com

## **MGC Diagnostics**

350 Oak Grove Parkway  
St Paul MN 55127  
616-340-4790

**Greg Hembree, RRT, LRT**

ghembree@mgcdiagnostics.com

# Thank you to our Industry Partners!

As of 3/21/26

## Michigan Instruments

4717 Talon Court SE  
Grand Rapids MI 49512  
6165549696

**Chris Blanker, President**  
sales@michinst.com

## Monaghan Medical Corporation

32784 Stefano Dr  
Rockwood MI 48173  
rsorovetz@monaghanmed.com

**Renee Sorovetz BS, RRT**  
rsorovetz@monaghanmed.com

**Michael Shene**  
michael.shene@monaghanmed.com

## Munson Healthcare

1105 Sixth St  
Traverse City MI 49684  
231-935-7213

**Serina Reed, Talent Advisor II**  
sreed5@mhc.net

Platinum Educational Group

**Keanu Toles**  
keanu.toles@platinumec.com

## MyMichigan Health

4000 Wellness Drive  
Midland MI 48670  
9898393120

**Kelly Dey, BSRT, RRT**  
Kelly.Dey@mymichigan.org

## MyMichigan Health

530 Somerset Rd  
Saginaw MI 48638  
9894885467

## Nationwide Children's Hospital

700 Children's Drive

Columbus OH 43205  
614-355-4324

**Justin Bowman**  
justin.bowman@nationwidechildrens.org

**Crystal Alfred**  
crystal.alfred@nationwidechildrens.org

## Nihon Kohden

4792 Summit Lake Place  
Indianapolis IN 46239  
949-268-4938

**Jim Borders RRT**  
jim\_borders@nihonkohden.com

## Philips RS North America LLC

1010 Murry Ridge lane  
Murrysville PA 15668  
847-714-2798

**Jeff White Clinical Sales Manager**  
j.white@philips.com

## Platinum Educational Group

4370 Chicago Drive Suite B # 205  
Grandville MI 49418  
6168187877

**Courtney DuBay**  
courtney.dubay@platinumed.com

**Keanu Toles**  
keanu.toles@platinumec.com

## Respire Home Care

1535 E Highwood  
Pontiac MI 48340  
248-821-3619

**Autumn Dodge**  
autumn.dodge@respirehomecare.com

**Saadiq Jamaluddin**  
saadiq.jamaluddin@respirehomecare.com

## Select Specialty Hospital

4714 Gettysburg  
Mechanicsburg PA 17055  
313-938-3157

**Tina Powers**  
tlpowers@selectmedical.com

**Nichole Coolsen**  
NCoolsen@selectmedical.com

## Servo Ventilators

6270 Mack Road

# Thank you to our Industry Partners!

As of 3/21/26

Howell MI 48855  
517-219-5035

## **Stephen Sapienza**

stephen.sapienza@getinge.com

## **Janelle Grantham, RRT**

janelle.grantham@getinge.com

## **Siemens Healthineers**

937 Pearson Dr  
Milford MI 48381  
2484726143

## **Marcy Johnson Account Executive**

marcy.johnson@siemens-healthineers.com

## **Society of Critical Care Medicine, Michigan Chapter**

46880 Pickford St  
Northville MI 48168  
4129163354

## **Nicholas Farina, PharmD, BCCCP**

nfarina@med.umich

## **Krassimir Denchev, MD**

kdenchev@wayne.edu

## **Sunset Healthcare Solutions**

141 W Jackson Blvd  
Chicago IL 60604  
2627881855

## **Hunter Baudino**

Hbaudino@sunsethcs.com

## **Tri-anim**

5000 Tuttle Crossing Blvd  
Dublin OH 43016  
616-460-7998

## **John Elderkin**

john.elderkin@tri-anim.com

## **Trinity Health Grand Rapids**

200 Jefferson Ave SE  
Grand Rapids MI 49503  
6166856142

## **Jennifer Koetje**

koetjejm@trinity-health.org

## **Kristen Carpenter**

Kristen.Carpenter@trinity-health.org

## **Emme Medonis**

Emme.Medonis@trinity-health.org

## **Jennifer Arntz**

Jennifer.Arntz@trinity-health.org

## **University of Michigan-Flint**

3180 William S White 303 E Kearsley Street  
Flint MI 48502  
810-762-5975

## **Kay-Lee Fuller, Recruiter**

kayleefu@umich.edu

## **Vapotherm, Inc.**

100 Domain Drive  
Exeter NH 03833  
3306206247

## **Ciera Preer, MHA, RRT-NPS**

cpreer@vtherm.com

## **Vero Biotech**

736 WILFRED ROAD  
Hudson WI 54016  
6514708499

## **Andrew Rowe MBA, RRT-NPS, C-NPT**

Andrew.Rowe@vero-biotech.com

## **Viatris**

1000 Mylan Blvd. 1000 Mylan Blvd.  
Canonsburg PA 15317  
(724) 485-6910

## **Nicole Keglovitz**

nicole.keglovitz@viatris.com

## **Janis Skarbek**

Janis.Skarbek@viatris.com

## **Werfen**

585 Bucknell Ct  
Rochester Hills MI 48309  
5862125996

## **Kyle Lachowicz**

klachowicz@werfen.com

## **Cori Krause**

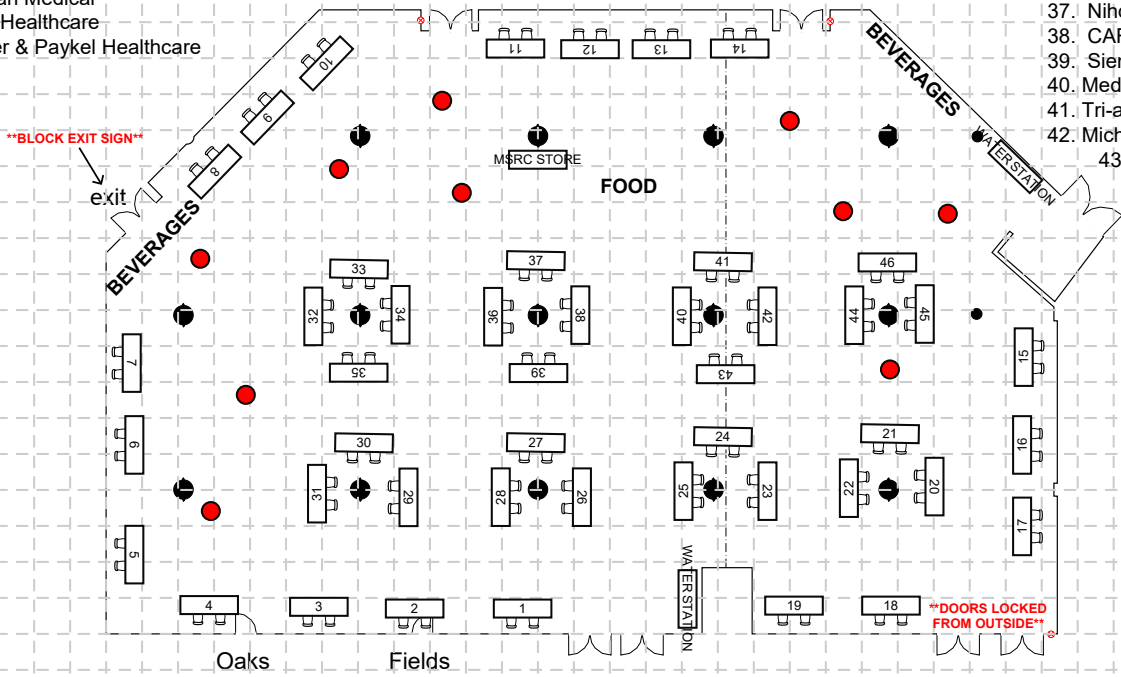
ckrause@werfen.com

# Exhibit Hall Layout

## MSRC Spring Conference - Exhibit Hall - Kalamazoo Room

Table Assignments

- |                                |                                       |                          |                                    |                                   |
|--------------------------------|---------------------------------------|--------------------------|------------------------------------|-----------------------------------|
| 1. Trinity Health              | 11. Society of Critical Care Medicine | 18. Servo Ventilators    | 25. Vapotherm                      | 32. Airgas USA                    |
| 2. Carelinc Medical            | 12. MED Alliance Group, Inc.          | 19. ABM Respiratory Care | 26. Mary Free Bed                  | 33. U of M-Flint                  |
| 3. Corewell Health             | 13. Mallinckrodt Pharmaceuticals      | 20. Vero Biotech         | 27. Nationwide Children's Hospital | 34. C.S. Mott Children's Hospital |
| 4. Baxter                      | 14. Fitzsimmons Hospital Services     | 21. Electromed           | 28. Werfen                         | 35. Sunset Healthcare Solutions   |
| 5. Select Specialty            | 15. Mercury Medical                   | 22. Airlife              | 29. MyMichigan Health              | 36. Philips RS North America      |
| 6. Respire Home Care           | 16. Platinum Educational Group        | 23. Aerogen              | 30. MGC Diagnostics                | 37. Nihon Kohden                  |
| 7. Hamilton Medical            | 17. Medilodge                         | 24. Viatris              | 31. Hart Medical                   | 38. CAREstream America            |
| 8. Monaghan Medical            |                                       |                          |                                    | 39. Siemens Healthineers          |
| 9. Munson Healthcare           |                                       |                          |                                    | 40. Medline                       |
| 10. Fisher & Paykel Healthcare |                                       |                          |                                    | 41. Tri-anim                      |
|                                |                                       |                          |                                    | 42. Michigan Instruments          |
|                                |                                       |                          |                                    | 43. Masimo                        |



Thank you to our sponsors!

## Silver Sponsors



**Thank you to our sponsors!**

**Bronze Sponsor**

# werfen

## ***WIN A FREE 2027 SPRING CONFERENCE REGISTRATION!***

*Pick up an exhibit hall bingo card at the registration table. After you visit with an exhibitor, have a representative stamp or sticker your bingo card.*

*Drop off your completed card by the end of lunch on Wednesday and your name will be entered for a free 2027 spring conference registration.*

# Sputum Bowl Sponsors

*Thank you for your support!*

